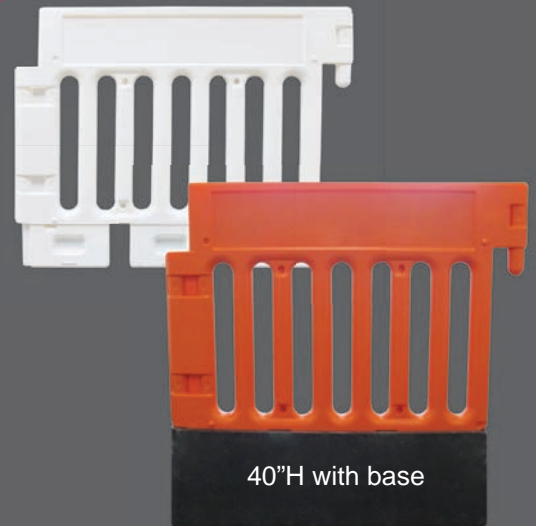


STRONGWALL BARRICADE

ADA Compliant
Pedestrian Barricade
Longitudinal Channelizing Device



Create a temporary pedestrian walkway



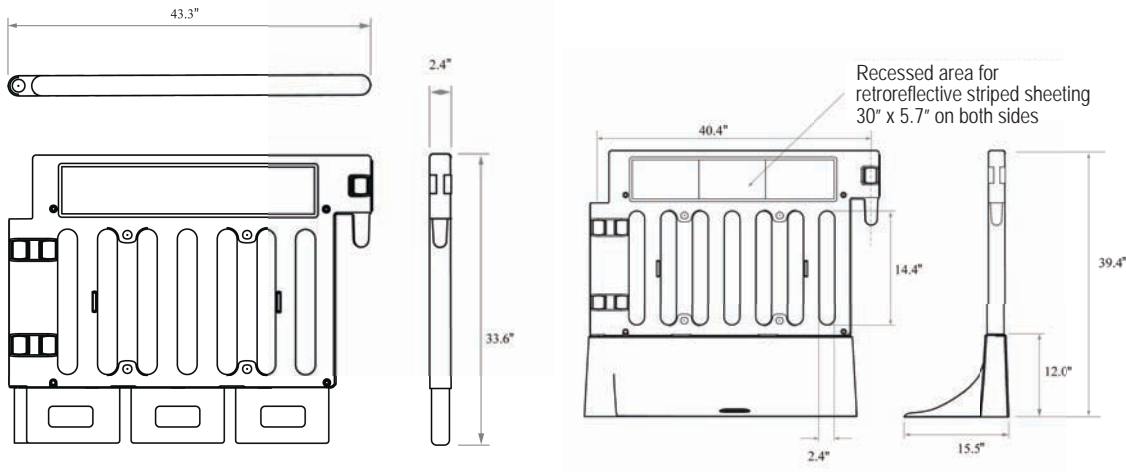
- ADA Compliant, no trip hazard for pedestrians
 - meets or exceeds ADA Guidelines and MUTCD Standards
- No sandbags needed!
- Linking sections are made up of two pieces that securely fit together
 - Top Wall - rugged polyethylene
 - Bottom Base - 43 lb. self weighted black base, with carry handle
- Modular system can be shaped to any layout
- Stable in windy conditions
- Quick and easy to install
- Anti-tamper linking system
 - difficult for unauthorized personnel to dismantle when linked
- Compact stacking lowers transportation costs
- Available in orange or white, with or without retroreflective sheeting
- NCHRP-350/MASH Accepted, Meets MUTCD Standards

43 lb. Base
Eliminates
Sandbags



TF026 Rev. 2

STRONGWALL BARRICADE



Specs

Composition	Polyethylene
Weight	8 lbs., 51 lbs. w/base
Colors	Orange, White
Sheeting Area	6" x 30" on each side
Retroreflective Sheeting	Striped sheeting in engineer grade or high intensity prismatic grade
Base Dimensions	40.4" L 15.5" W 12" H
Base Weight	43 lbs.



Longitudinal Channelizing Device
Use on Roadways Instead of Traffic Barrels



Distributed by



1-800-236-0112
www.tapconet.com

5100 West Brown Deer Road
Brown Deer, WI 53223

