



Safe travels.



Solar Panel charges two rechargeable AA batteries (included)

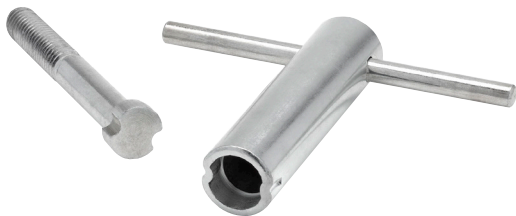
Tough, double-sided 7" polycarbonate lens

On/Off Switch

Head assembly swivels 90°

Polypropylene case with UV inhibitors

Light Mode Switches:  
On/Off and Flash/Steady Burn



Includes: Anti-Vandal 1/2" Bolt and Installation Tool (1/2" driver is required for mounting)

## Solar LED Barricade Flasher

Night-time Operation: Steady Burn and Flash Modes

TAPCO's Solar LED barricade light is constructed for rugged work-zone use, automatically turning on at dusk and off at dawn. During the day the solar panel charges the batteries, even in overcast conditions. A single full charge provides 60 hours (5 nights) of continuous use.

There are two modes of operation (steady burn or flash). The flasher automatically begins to operate when the photocell senses the ambient light falling below 400 lux (sunset to sunrise on a clear day).

The unit is maintenance-free, with long-life rechargeable NiMH batteries. To provide additional durability, the circuit module is encapsulated in epoxy for protection against moisture and shock damage.

Available in  
Amber & Red



Quickly secures to a barricade or channelizing drum with the provided tamper-proof bolt/cup. Barricade sold separately.

## Operating Instructions

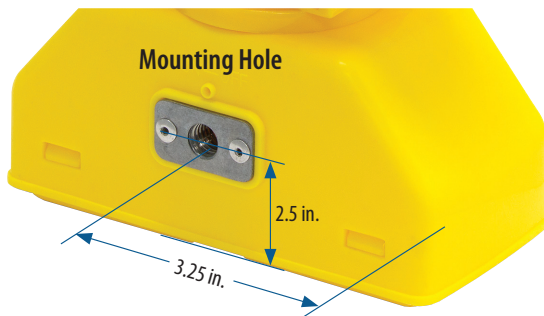
*Flasher is designed to flash only in very low light or darkness; batteries charge during daylight.*

### To test the flasher:

1. Cover the solar collector to completely block incoming light. To test flash modes, press button on side of flasher between flash and steady burn. Steady burn has a lower output (less bright) than flash mode.
2. If unit does not flash, charge the batteries by placing the flasher in full sun with solar collector aimed toward the sun for a minimum of eight hours. Repeat step 1. If unit still does not flash, the batteries are no longer able to hold a charge. The unit is not designed to be serviceable, so dispose of it according to local regulations.

### To mount flasher on a barricade or other device:

1. Place the flasher in the bracket or socket with the Flasher hole in alignment with the device's mounting hole. Not all traffic control devices are equipped with hole, so you may need to drill a hole if none is available. Your device's mounting plate must be  $\frac{3}{4}$ " thick or less: otherwise the bolt will not seat.
2. Insert the tamper-proof bolt through the inside of the cup, through your device's mounting plate and into the flasher mounting hole. Use a  $\frac{1}{2}$ " driver wrench with the supplied socket to tighten.



**Anti-Vandal  $\frac{1}{2}$ " Bolt and Installation Tool**  
( $\frac{1}{2}$ " driver is required for mounting)



## SPECIFICATIONS

Solar panel	4.5V (60mA) mono crystalline silicon
Batteries	Two rechargeable AA NiMH batteries (included)
Viewing distance	3300 feet (more than $\frac{1}{2}$ mile)
Operating time	<ul style="list-style-type: none"> <li>■ 60 hours (5 nights) on a single charge</li> <li>■ Activated when photocell senses the ambient light falling below 400 lux (sunset to sunrise on a clear day)</li> </ul>
Lens construction	Double-sided, amber polycarbonate
LED Flasher	<ul style="list-style-type: none"> <li>■ High intensity amber LED</li> <li>■ Center of lens intensity: <math>&gt;10</math> candela (flash mode)</li> <li>■ Max light intensity: 17.1 candela</li> </ul>
Flash rate	60 times per minute, $\pm 10\%$
Switches	Flash/Steady Burn; On/Off (switch key included)
Housing	<ul style="list-style-type: none"> <li>■ Polypropylene with UV color protection</li> <li>■ Weatherproof only: do not submerge in water</li> <li>■ Head assembly swivels <math>360^\circ</math></li> </ul>
Weight	1.9 lbs
Charging	8 hours for full charge
Mounting hardware	Tamper-proof $\frac{1}{2}$ " bolt
Operating temperature	$-40^\circ\text{F}$ to $+175^\circ\text{F}$

For more information visit [tapconet.com](http://tapconet.com) | (800) 236-0112

