

DeepBlue

Sensor **v2t**



S-model

Travel time, O/D matrices, incident detection, Online web based applications

Bluetooth, Wi-Fi, GPS, 3G, Dual-SIM, Ethernet, Multi-color LED, GPIO, RTC Battery, Non-volatile memory

Field proven, easy set-up and configuration, multi-lane, side-fire, Wireless device detection, tracking

Cost effective, Low power, Self-diagnostics, Autonomous, Reliable and secure transmission

Passionately designed by

trafficnow

ALL-IN-ONE
INTERNAL | BLUETOOTH &
ANTENNAS | V2t-PLATFORM

Distributed by



1-800-236-0112
www.tapconet.com

5100 West Brown Deer Road
Brown Deer, WI 53223

GSA Contract Holder
GS-07F-5924R
GS-07F-0234U

U.S. COMMUNITIES
GOVERNMENT PURCHASING ALLIANCE
Supplier Partner

DeepBlue

Sensor



POWER SUPPLY

12 to 48 VDC
 Min 1.93 W (configuration dependent)
 PoE (Power over Ethernet)

CPU & MEMORY

ARM 9 Processor
 128 MB RAM / Flash
 Micro SD storage

COMMUNICATIONS

Ethernet
 Optional 3G/CDMA Worldwide
 Dual SIM-Card slot
 Remote Sensor Access
 Optional General Purpose IO

OPERATIONS

Linux based OS
 LED for operations diagnostics

ENVIRONMENTAL

-35°C to +80°C
 IP65 housing
 Shock/vibration: NEMA TS2-2003

DIMENSIONS & WEIGHT

H x W x L 200 mm x 148 mm x 62 mm
 0.66 kg (1,035 kg including stainless steel brackets)

BLUETOOTH

internal antenna
 65° angle
 Detects all standard Bluetooth® versions
 -102dB receive sensitivity

WI-FI

Optional Wi-Fi detection

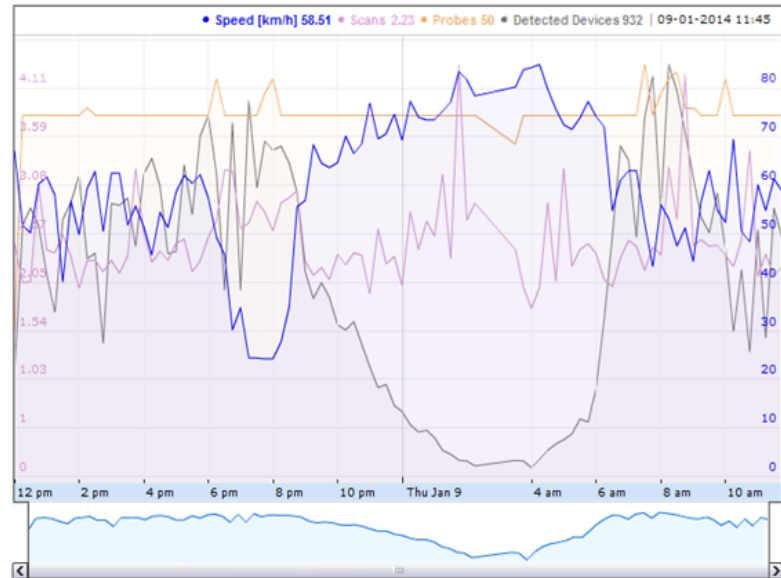
Real Time Segment data

Click on a segment in order to display its information

Segment:	[8] Av. Narraisa de Jesús Sector Sauces->Puente Unidad Nacional (Puntilla-Guail)
Segment length:	6200 m
Heavy traffic if speed is below:	30.00 km/h
Free-flowing traffic if speed is above:	40.00 km/h
Average speed in segment:	49.29 km/h
Average travel time:	0 h 7 m 33 s
Sample Size:	10
Detected Devices:	146
Time interval:	2014-01-09 11:54:00

Most recent Historic values

Show OD Matrix Show History



S-model

REGULATORY

RoHS Compliant
 CE, FCC certified



Passionately designed by
trafficnow