

DeepBlue^{v2t} Sensor



C-model

Travel time, O/D matrices, incident detection, Online web based applications, Cabinet w/solar

Bluetooth, Wi-Fi, GPS, 3G, Dual-SIM, Ethernet, Multi-color LED, GPIO, RTC Battery, Non-volatile memory

Field proven, easy set-up and configuration, multi-lane, side-fire, Wireless device detection, tracking

Cost effective, Low power, Self-diagnostics, Autonomous, Reliable and secure transmission

Passionately designed by
trafficnow

CABINET | BLUETOOTH &
VERSION | V2t-PLATFORM

Distributed by



1-800-236-0112
www.tapconet.com

5100 West Brown Deer Road
Brown Deer, WI 53223

 Contract Holder
GS-07F-5924R
GS-07F-0234U

 U.S. COMMUNITIES
GOVERNMENT PURCHASING ALLIANCE
Supplier Partner

DeepBlue

Sensor



POWER SUPPLY

12 to 48 VDC

Min 1.93 W (configuration dependent)

CPU & MEMORY

ARM 9 Processor

128 MB RAM / Flash

Micro SD storage

COMMUNICATIONS

Ethernet

Optional 3G/CDMA Worldwide

Remote Sensor Access

Optional General Purpose IO

OPERATIONS

Linux based OS

LED for operations diagnostics

ENVIRONMENTAL

-35°C to +80°C

Shock/vibration: NEMA TS2-2003

CABINET DIMENSIONS & WEIGHT

H x W x L 400 mm x 300 mm x 200 mm

3.50 kg (excl. Battery and solar panel)

BLUETOOTH

Single or Dual channel operation

Detects all standard Bluetooth® versions

More than 500 meters range

Up to -104dB receive sensitivity

WI-FI

Optional Wi-Fi detection

REGULATORY

RoHS Compliant

CE, FCC certified

Real Time Segment data

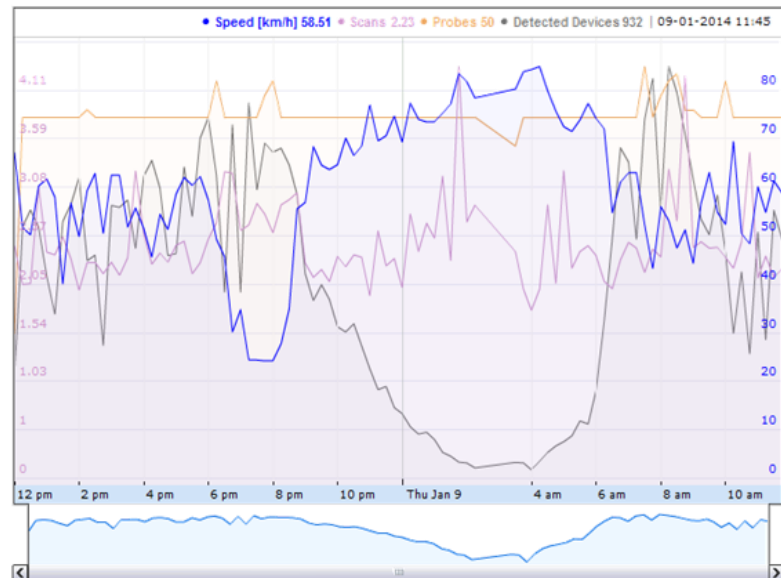
Click on a segment in order to display its information

Segment:	[8] Av. Nardisa de Jesús Sector Sauces->Puente Unidad Nacional (Puntilla-Guail)
Segment length:	6200 m
Heavy traffic if speed is below:	30.00 km/h
Free-flowing traffic if speed is above:	40.00 km/h
Average speed in segment:	49.29 km/h
Average travel time:	0 h 7 m 33 s
Sample Size:	10
Detected Devices:	146
Time interval:	2014-01-09 11:54:00

Most recent Historic values

Show OD Matrix

Show History



C-model



Passionately designed by

trafficnow